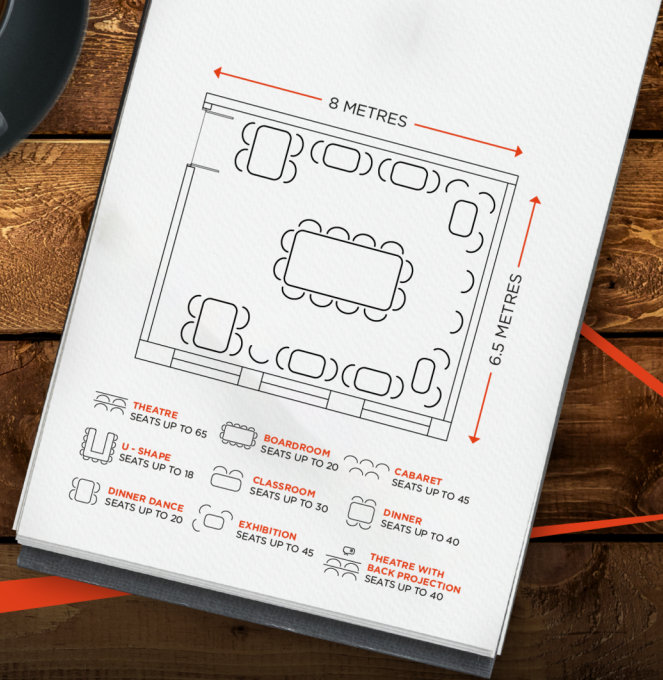


THE LOUNGE

MEETING SPACE



Sit your team down in our lounge bar inspired by the classic architecture of Birmingham.

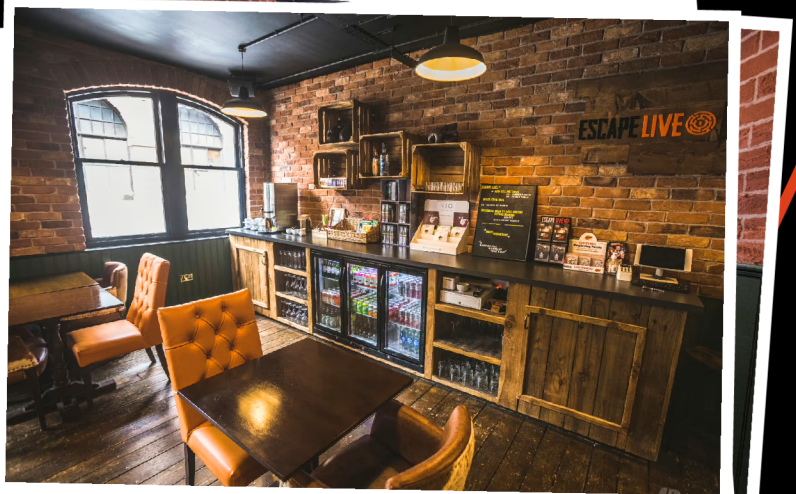
With space for 50 people in a private setting, this is an ideal meeting space with full AV capabilities, natural lighting, air conditioning, and comfortable furnishings. Perfect to engage and inspire your team. This area can have various layouts, all tailored to your meeting requirements.

There is nearby parking in central Birmingham, or we are just a short walk from Birmingham Snow Hill and Jewellery Quarter train stations.

We loved the day. Perfect venue, full of character! The Lounge was ideal for us to hold our monthly sales meeting, enjoy a superb breakfast and lunch, and have a few drinks after. We will be back next month!



We used the main room for our meeting in the morning, then split into the escape rooms for our team-building portion of the day. I've not done an escape room before, and I didn't expect to enjoy it as much as I did... easily one of the best corporate away days I've attended.



MAKE AN ENQUIRY

0121 572 3131
info@escapelive.co.uk
www.escapelive.co.uk

FIND US

18 - 24 Constitution Hill,
Jewellery Quarter,
Birmingham, B19 3LY

PICK YOUR PERFECT PACKAGE

We offer comprehensive packages that include catering, drinks, and a day filled with activities. Additionally, we offer Team Dynamics sessions to explore how escape rooms can help you achieve collaborative goals and improve leadership skills.

	NANO £62PP	MYSTERY MISSION £82PP	CHALLENGER £78PP	DREAM TEAM £108PP
Escape Room Experience	✓	✓	✓ x2	✓ x2
Screens	✓	✓	✓	✓
Unlimited Coffee, Tea & Water	✓	✓	✓	✓
Stationery and Flipcharts	✓	✓	✓	✓
Designated Games Master	✓	✓	✓	✓
Team Certificates	✓	✓	✓	✓
Team Photo	✓	✓	✓	✓
Room Hire	✓	✓	✓	✓
Free Return Voucher	✓	✓	✓	✓
Alcoholic/non-alcoholic drink		✓		✓
Premium Buffet		✓		✓
Hot or Continental Breakfast				✓
Team Dynamics Session				✓

ESCAPE LIVE IS LOVED BY

